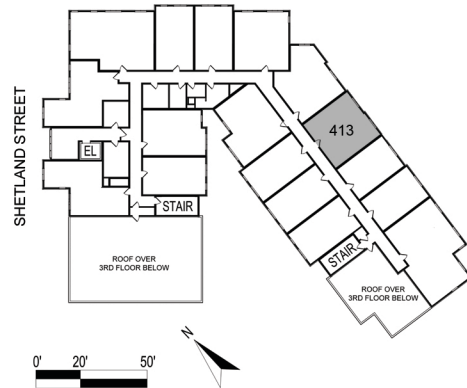


# UNIT 413

692 SF

FLOOR 4

1 BEDROOM | 1 BATHROOM | HEARING IMPAIRED



## PROPERTY MANAGEMENT

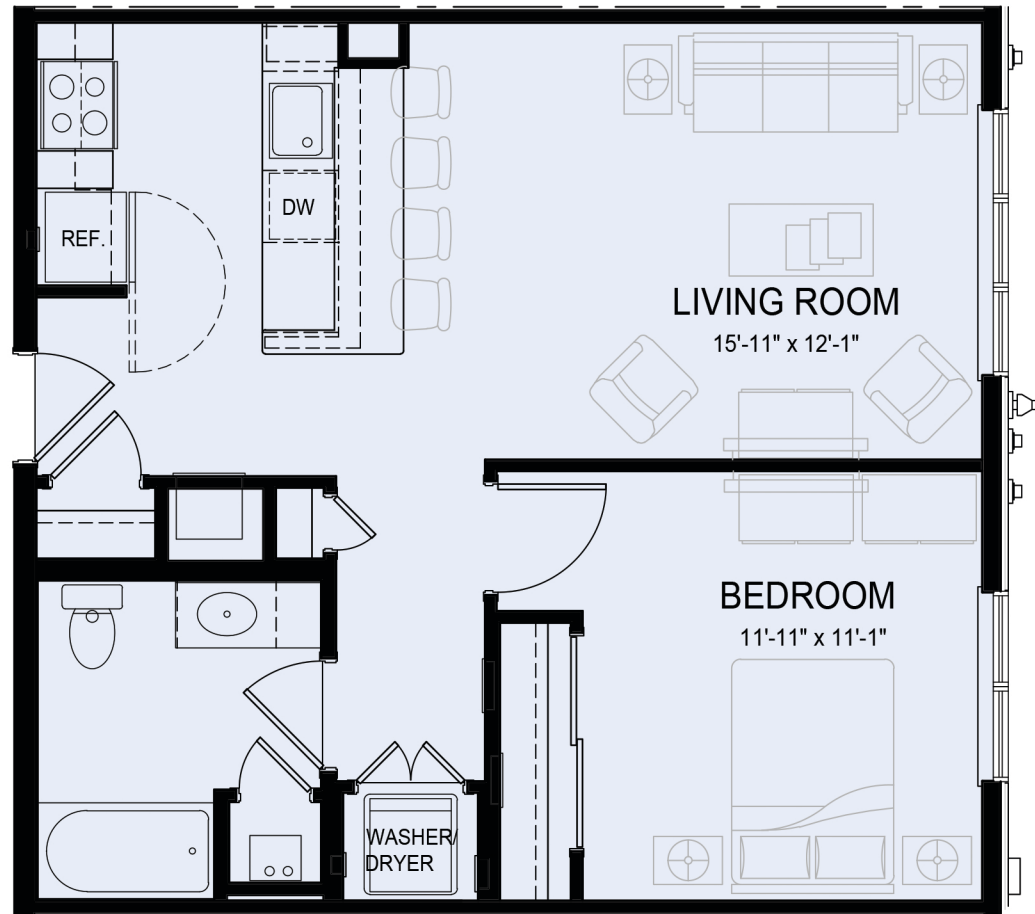
The Galvin Group  
375 Neponset Ave.  
Dorchester, Ma 02122  
617-436-2000  
thecara@galvingrouppre.com

## PROPERTY ADDRESS

The Cara  
13 Shetland Street  
Boston, Ma 02119

## DEVELOPED BY

The Holland Companies  
519 Albany Street  
Boston, Ma 02118



\* Dimensions and prices are subject to change.



the  
HOLLAND  
COMPANIES  
*Design & Construction*

THE cara  
BOSTON APARTMENTS