

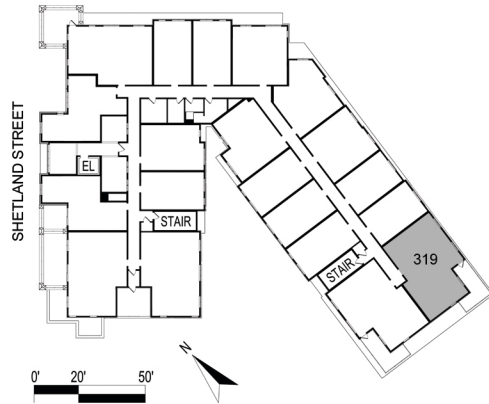
UNIT 319

1,060 SF

FLOOR 3

2 BEDROOM | 2 BATHROOM | HEARING IMPAIRED

Monthly Fee | \$0000



PROPERTY MANAGEMENT

The Galvin Group
375 Neponset Ave.
Dorchester, Ma 02122
617-249-4900
thecara@galvingroupre.com

PROPERTY ADDRESS

The Cara
13 Shetland Street
Boston, Ma 02119

DEVELOPED BY

The Holland Companies
519 Albany Street
Boston, Ma 02118

* Dimensions and prices are subject to change.



the
HOLLAND
COMPANIES
Design & Construction

THE *cara*
BOSTON APARTMENTS